



GATEWAY CITIES
COUNCIL OF GOVERNMENTS

Gateway Cities Sustainable Communities Strategy

Nancy Pfeffer, Director of Regional Planning
Gateway Cities Council of Governments

and

Wendy Tao, AICP
Cambridge Systematics

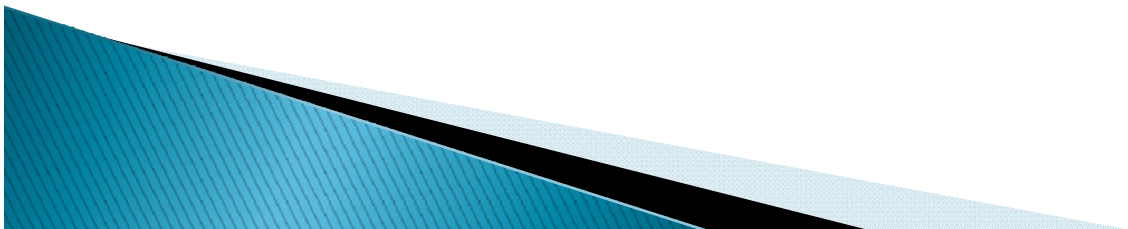
November 16, 2011



...and Avalon

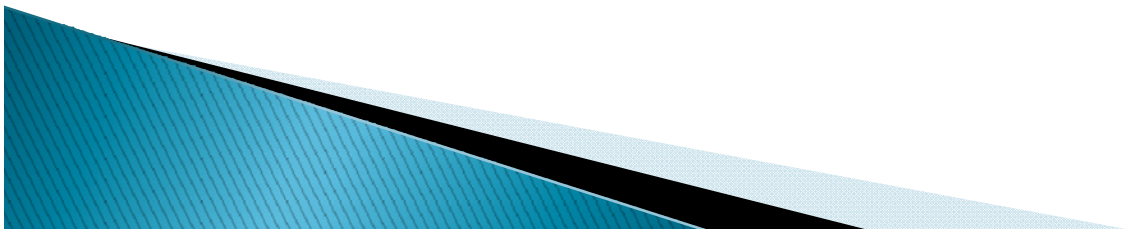
SB 375 Background

- ▶ Passed in 2008
- ▶ Intended to reduce greenhouse gas (GHG) emissions from transportation by changing land use by reducing sprawl
- ▶ Land use is only 2% of total statewide GHG reduction strategy under AB 32 (2006 – Global Warming Solutions Act)
- ▶ GHG reduction targets set by CARB for 2020 and 2035 to roll back to 1990 levels



SB 375 Approach

- ▶ Major regions of the state (MPOs) to produce Sustainable Communities Strategy (SCS) as a part of the Regional Transportation Plan (RTP)
 - SCS is a regional GHG plan that links transportation, housing and land use to reduce GHG emissions from cars and light trucks
- ▶ SCAG's next RTP is due in 2012 – timeline set by federal law
- ▶ SCS to achieve GHG reduction targets set by the California Air Resources Board
- ▶ No penalty at this time for failing to achieve target



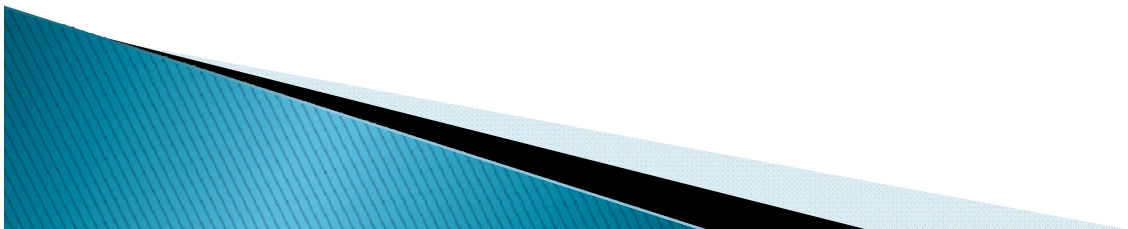
Regional SCS in Development

▶ SANDAG

- First RTP/SCS in the state
- Meets regional GHG reduction targets for 2020 and 2035, and projects reductions for 2050
- Attorney General letter identified problems with the EIR, including trends in GHG emissions

▶ SCAG

- Draft RTP/SCS to be released December 1
- Final to be approved April 5, 2012
- Pattern of GHG emission reductions remains to be seen



Gateway Cities Subregional SCS

- ▶ Subregional COG's have the option to prepare their own SCS
- ▶ Gateway Cities chose SCS delegation in January 2010:
 - Dense land use and transit patterns in Gateway Cities
 - Relatively low vehicle miles traveled (VMT) per capita
 - Ability to determine our own strategies in line with cities' plans
 - Many pieces of SCS already exist in COG studies, reports, and programs over the last decade

Process to Develop SCS



Technical workshops with city
Planning and Public Works staff

October 2010 – April 2011

Policy workshops with COG elected
officials

Winter/Spring 2011

Outreach to interested stakeholders

February 28, 2011

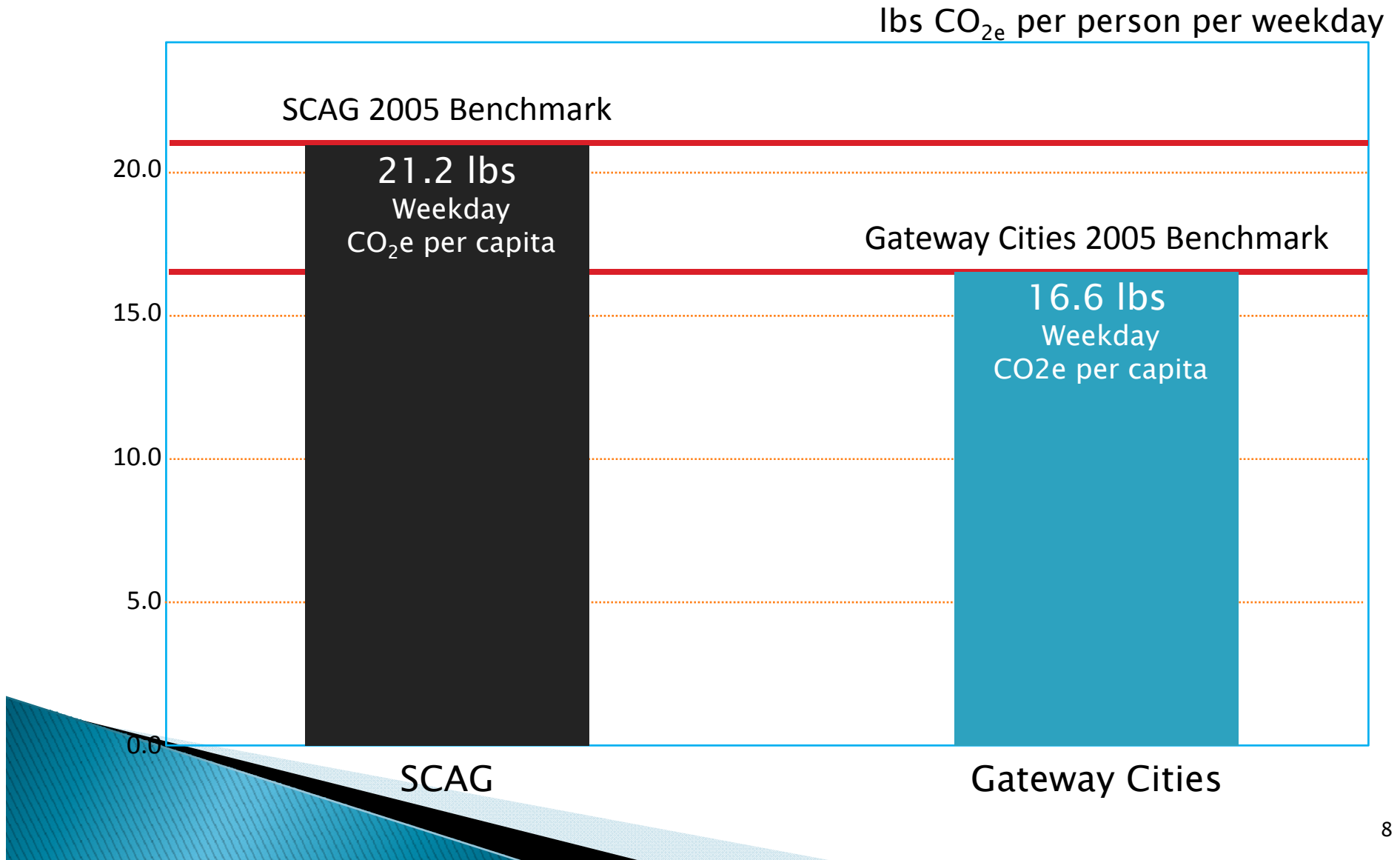
Public open houses (April/May)

Cerritos, Long Beach, Pico Rivera,
Commerce

Submitted to SCAG
June 30, 2011

Benchmarks for SCAG & Gateway Cities

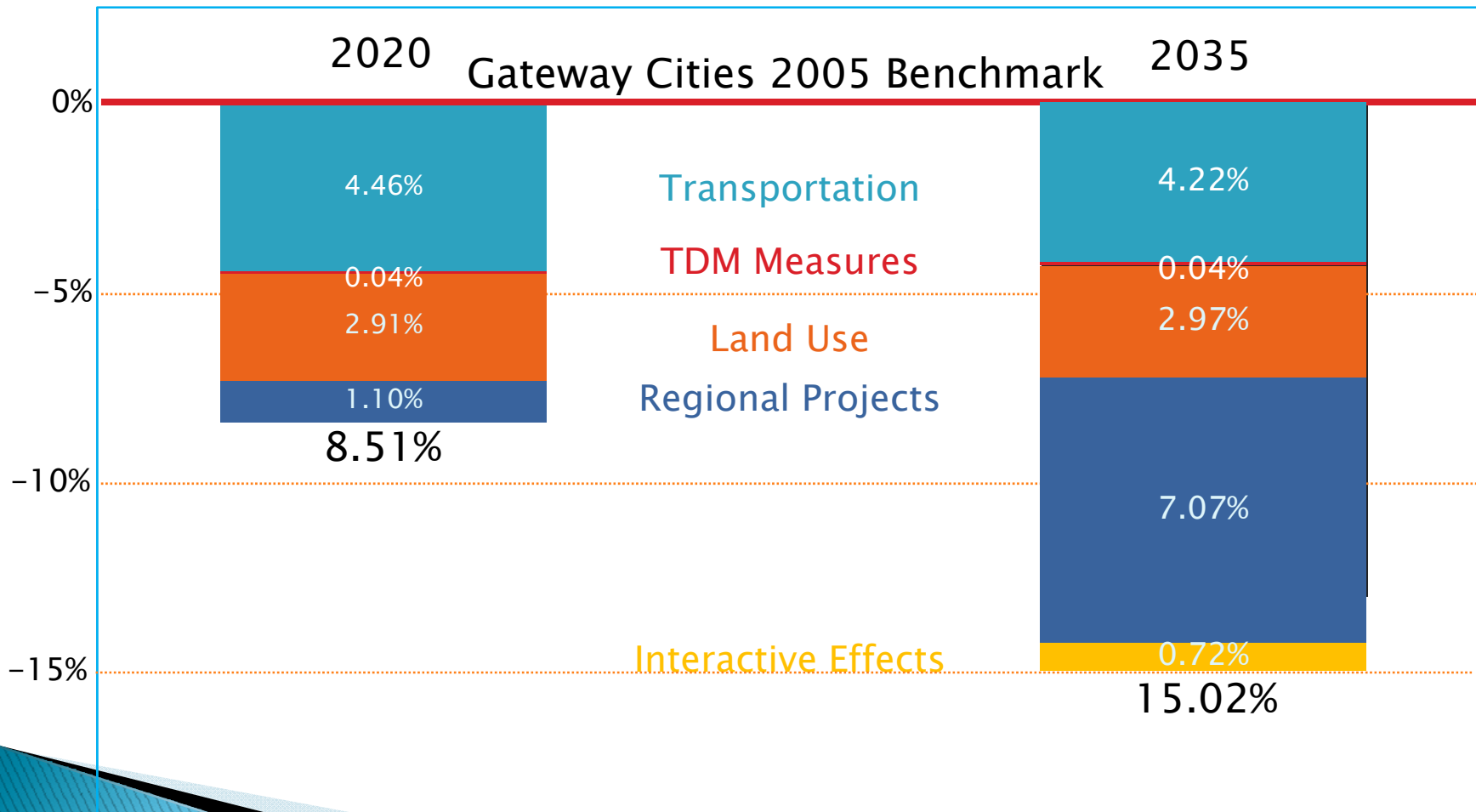
GHG (CO₂e) per Capita 2005



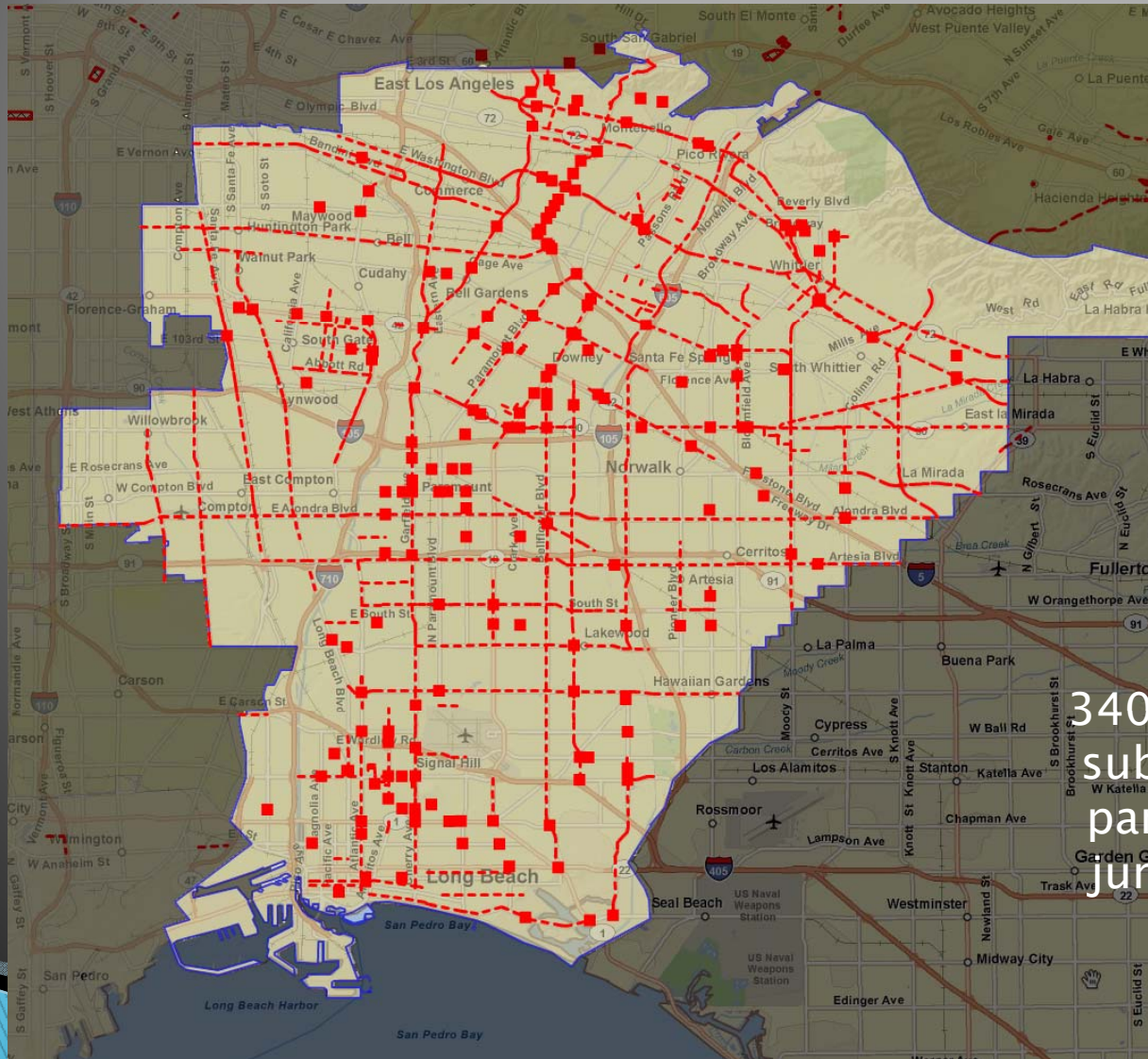
Summary of Results

Daily GHG Reduction Per Capita in Gateway Cities

Percent below 16.64 lbs CO₂e per person per day



GHG Reductions from Transportation Measures Submitted Transportation Project Locations



340 strategies
submitted by
participating
jurisdictions

Analysis of GHG Strategies with LACMTA Impact Tool

The screenshot displays the LACMTA Impact Tool interface. On the left, a map shows the Long Beach area with various streets and transit lines. The Metro logo and 'LA County CMP Fee Revenue and Growth Forecast Calculator' are visible at the top left. A navigation menu includes 'Map', 'Fee Calculator', 'Growth', 'Projects', 'GHG', 'Tools', and 'Help'. The 'GHG' tab is active.

On the right, the 'Edit GHG Details' panel is open, showing the following information:

- City: Long Beach
- Total Cost: \$10
- Total Funding Gap: \$10

A list of projects is shown below, with 'Broadway Separated Bikeway' highlighted in green:

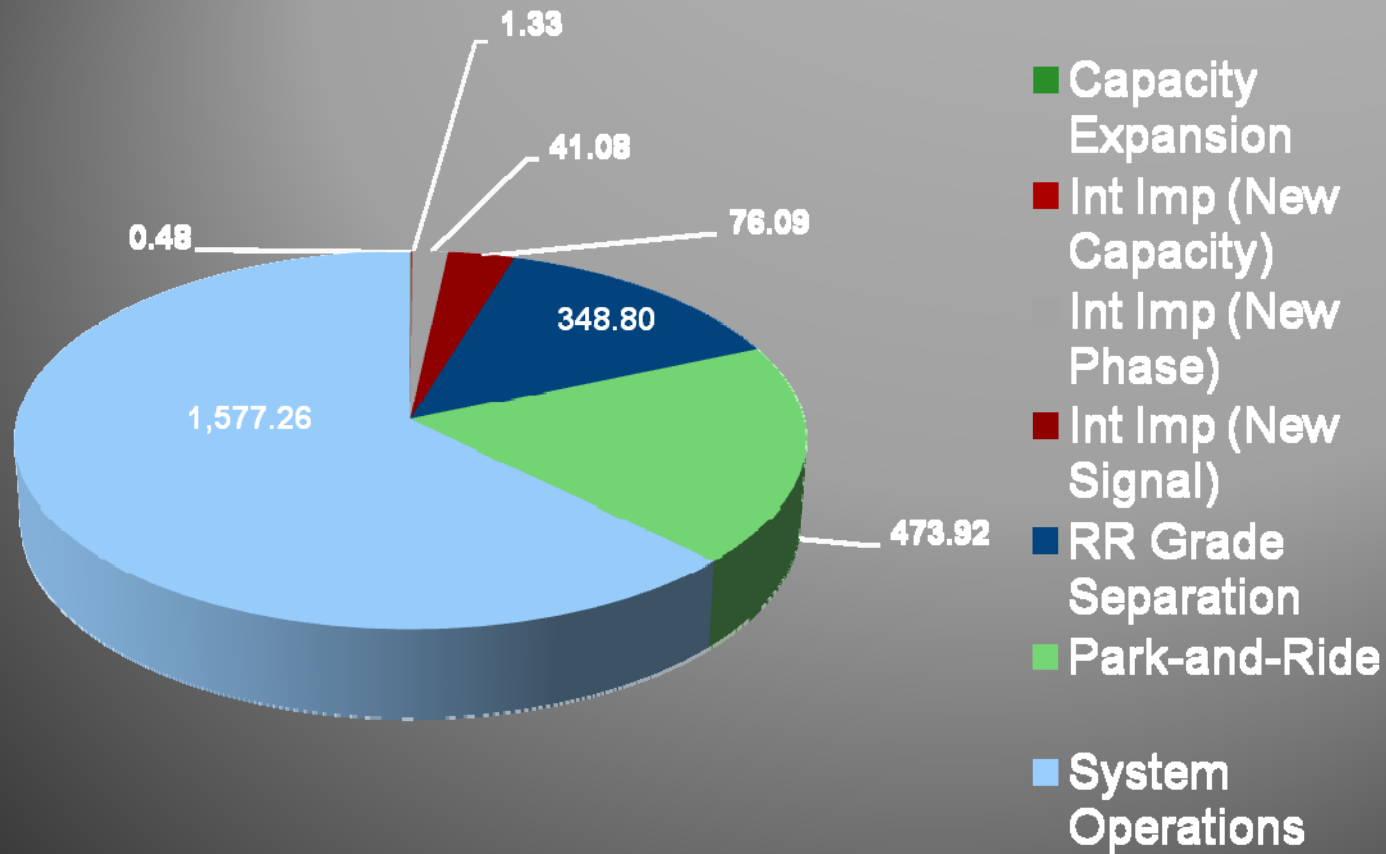
Project Name	Map
Naples Road Diet	▼
Long Beach Blvd. Pedestrian Improvement Project	▼
Sixth Street - Bike Boulevard	▼
Broadway Separated Bikeway	▼
Willow Street Pedestrian Improvement	▼
Atlantic Avenue Bike Lane Project	▼
Belmont Shore Green Lane and Sharrows	▼
Spring Street Transportation Improvement Project	▼
Harding Street Traffic Calming Project	▼
Third Street Street Bike Lanes	▼
Carson Street Bike Improvement Project	▼

Below the list, there are buttons for 'Add', 'View/Edit Details', 'Edit Location', and 'Export to Excel'. A checkbox option 'Show only Projects with missing GHG details' is also present.

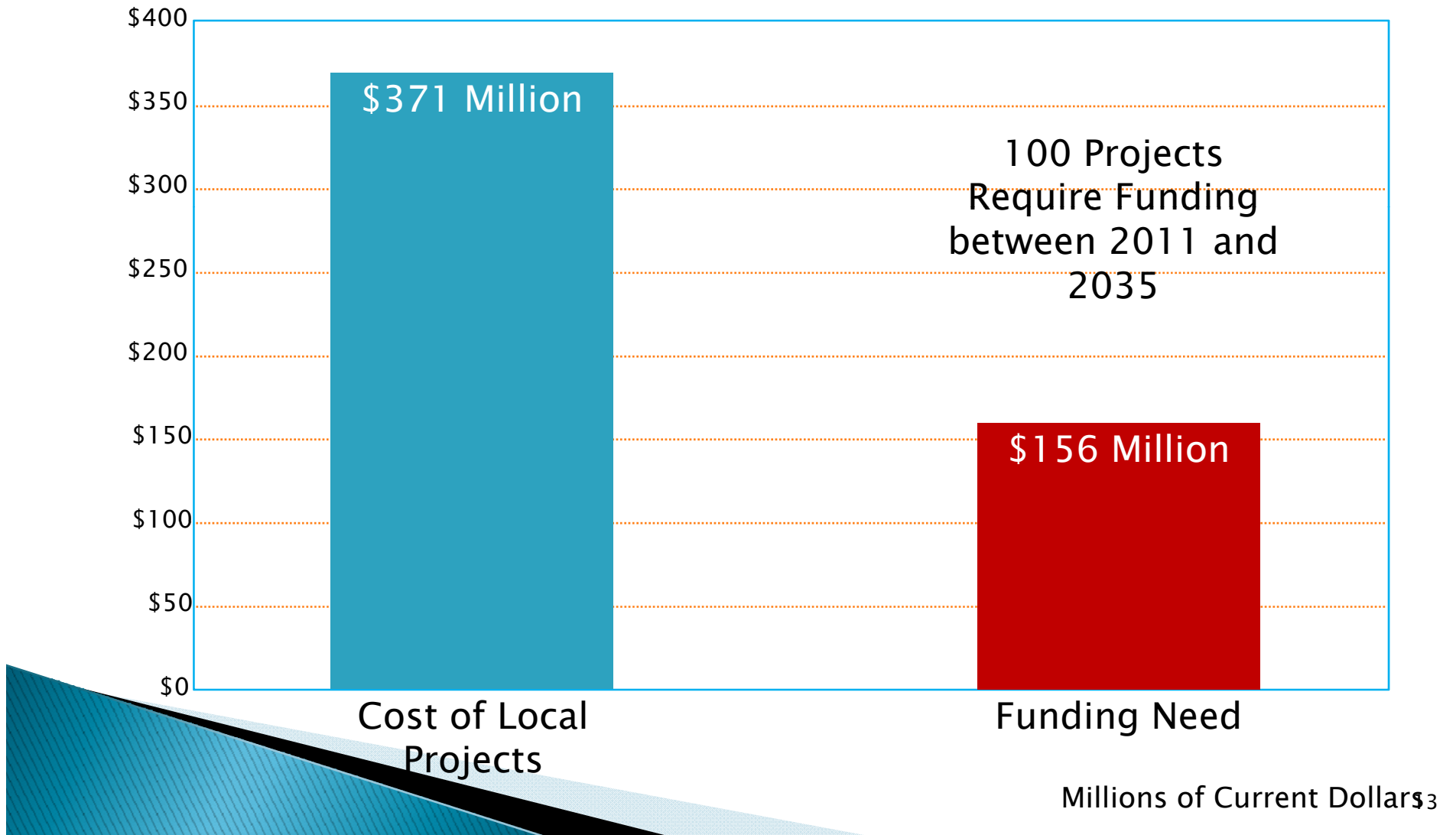
At the bottom of the interface, it says 'LA Metro Admin: Administrator' and '© Cambridge Systematics, Inc.'.

GHG Reductions from Transportation Measures

Average Annual Reduction by Project Type (tons)



Cost and Funding of Local Project Implementation



Travel Demand Management

- ▶ Three key city strategies:
 - Compressed work week schedules for city employees (12 cities)
 - Ridesharing programs for city employees (6 cities)
 - TDM or Trip Reduction Ordinances for new development (8 cities)
- ▶ Limited resources prevented outreach to the business community
- ▶ Includes interactive effects between land use and transit



Other strategies:

- County Bike-to-Work Day
- Transit pass promotions (CSULB U-Pass)
- Safe Routes to School
- Distance learning...

SCAG Sustainability Tool Used for Land Use Analysis

STEP 1 DEVELOPMENT TYPES

A Variety of Buildings, Streets and Amenities Create a “Place”



City Employment
High Mix



Town Residential
Low Mix



Suburban Residential
No Mix

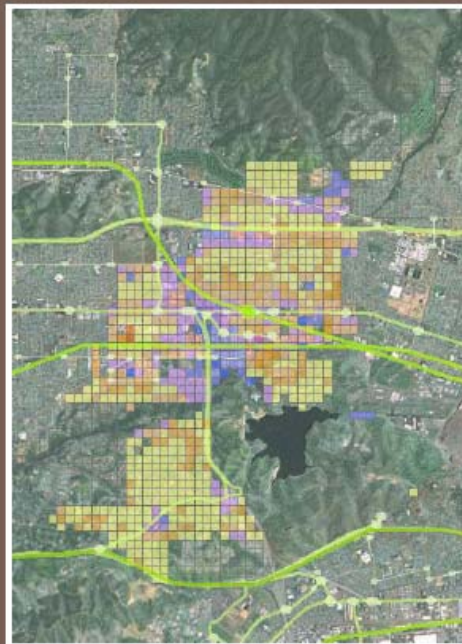
SCAG Sustainability Tool Used for Land Use Analysis

STEP2 PAINT A SCENARIO

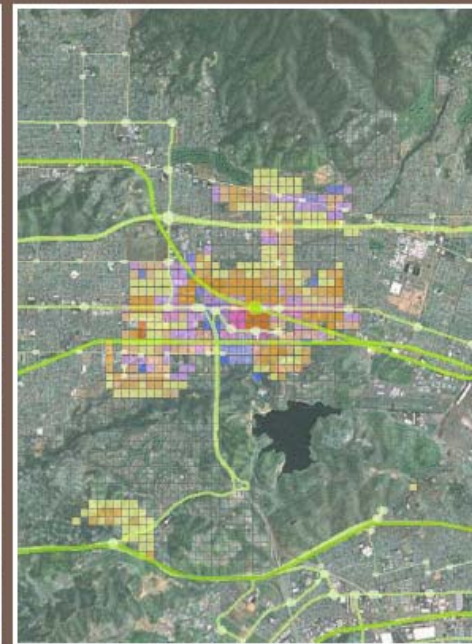
Design Scenarios by Painting Development Types on to the Landscape



Base Year



Compact Design

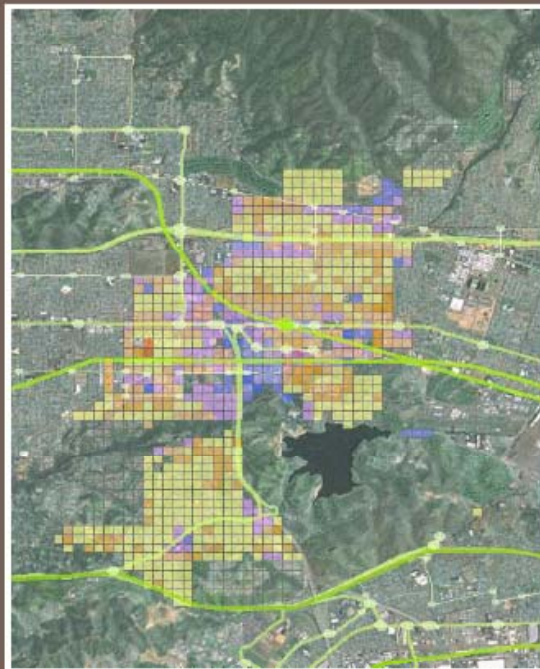


Transit Oriented

SCAG Sustainability Tool Used for Land Use Analysis

STEP 3 MONITOR INDICATORS ON-THE-FLY

Compare the Scenarios and Monitor the Impact of Land Use Decisions in Real Time



Detailed tables

Scenario	Total Population	Total Employment	Total Housing Units	Total Jobs per Household	Total Jobs per Employee	Total Jobs per Household	Total Jobs per Employee
Scenario 1	1,234,567	567,890	123,456	1.2	1.5	1.2	1.5
Scenario 2	1,345,678	678,901	134,567	1.3	1.6	1.3	1.6
Scenario 3	1,456,789	789,012	145,678	1.4	1.7	1.4	1.7
Scenario 4	1,567,890	890,123	156,789	1.5	1.8	1.5	1.8
Scenario 5	1,678,901	901,234	167,890	1.6	1.9	1.6	1.9

Quick reference graphs

Housing Mix

Jobs Mix

Employment Mix

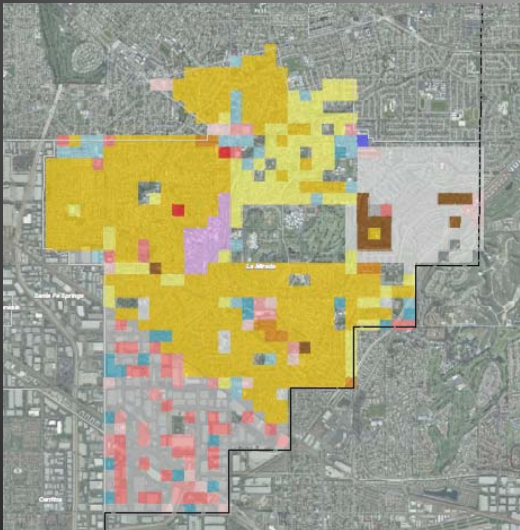
Jobs Housing Balance

Summary tables

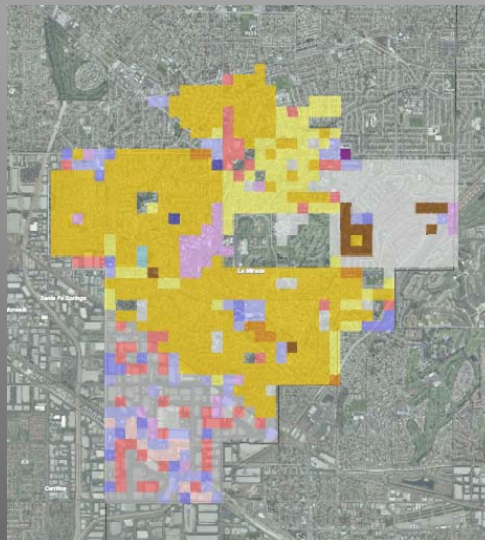
	Scenario 2	Scenario 3	Scenario 4	Scenario 5
Development				
Developed Acres	3,891.01	4,301.04	39.34	18.7%
Housing Mix				
Single Family	1,947.31	1,961.36	147.11	97%
Multi-Family	1,340.00	1,318.08	15.58	92%
Mobile Homes	18,798.60	18,798.60	163.22	0%
Employment Mix				
Total	2,318.99	2,318.99	184.11	8%
Office	17,869.00	17,869.00	165.84	92%
Retail	17,869.00	17,869.00	306.96	1%
Density				
Developed Unit	4.22	4.22	4.83	-
Employment	4.22	4.22	18.87	-
Job/Housing Balance	0.52	0.52	2.24	-
Vehicle Ownership per Household	2.01	2.01	2.16	-
Vehicle Miles Traveled per Household	43.85	43.86	44.13	-
Travel Mode Split				
One-Way Trip	99.7%	99.7%	94.9%	0.0%
Auto-Paragrade Trip	28.9%	28.9%	27.7%	1.0%
Transit Trip	2.2%	2.2%	1.7%	1.1%
One-Way Trip	0.1%	0.1%	0.0%	1.1%
Greenhouse Gas Emissions (tons/yr)	413.04	413.04	2.11	-
Greenhouse Gas Emissions (tons/yr/household)	0.021	0.021	0.022	0.022

Example: City of La Mirada Default Scenarios

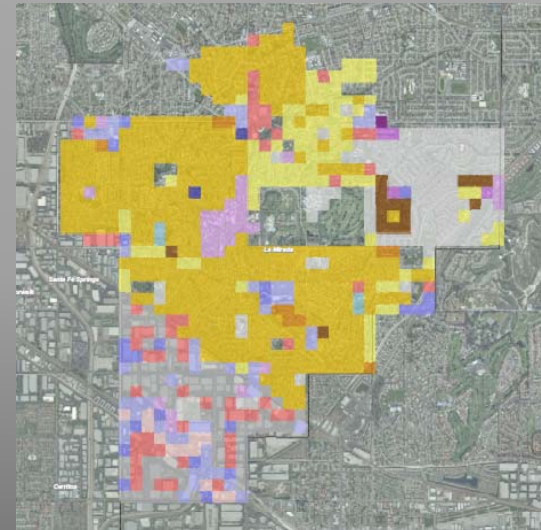
2008



2020



2035



All cities' future land use consistent with their adopted general plans

Regional Projects within Gateway Cities Subregion (includes Measure R projects)

1. I-710 Arterial Hwy Improvements
2. I-710 TSM/TDM
3. I-5 (I-605 to county line)
4. SR-91 / I-605 / I-405 Arterial Highway Improvements
5. BNSF Grade Separation
6. I-110 Harbor Transitway HOV conversion to HOT lanes
7. I-710 Freight Corridor
8. Signal synchronization of major arterials (re: I-710)
9. ITS Integration Plan
10. California High Speed Rail
11. Goldline Eastside Extension
12. OLDA Project
13. Regional Connector
14. Green Line Extension to LAX
15. I-5 (between I-605 to I-710)
16. I-5 Arterial Highway Improvements
17. I-605 Hot Spots

For Further Information

- ▶ Gateway Cities COG Web Site for SB 375 and the SCS:

www.gatewaycog.org/sb375.html

- ▶ COG Staff Contact:

Nancy Pfeffer, Director of Regional Planning

nancy@networkpa.net

562-901-2037

- ▶ Cambridge Systematics Contact:

Wendy Tao, AICP

wtao@camsys.com

510-873-8700