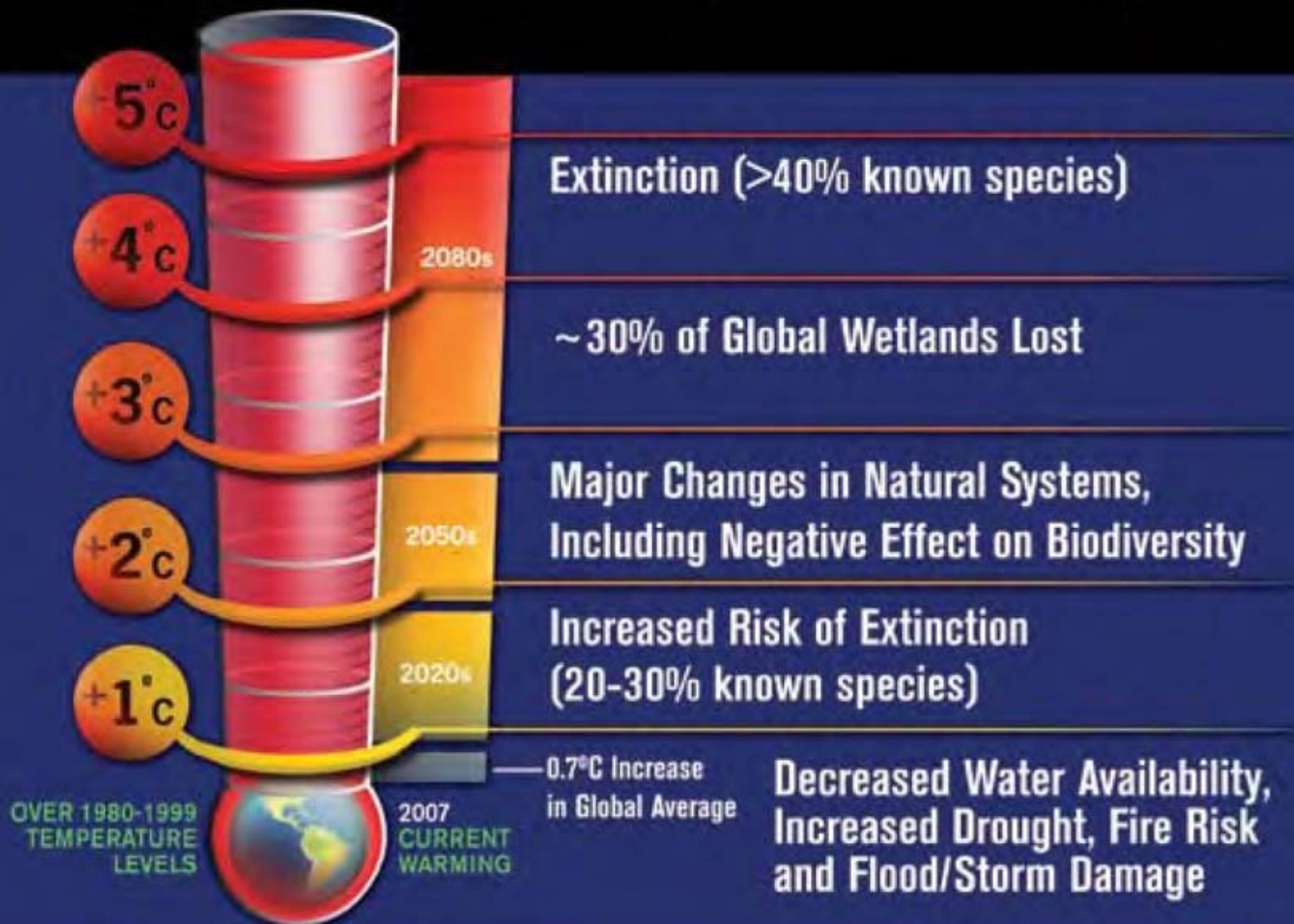


Future Global Impacts on Ecosystems



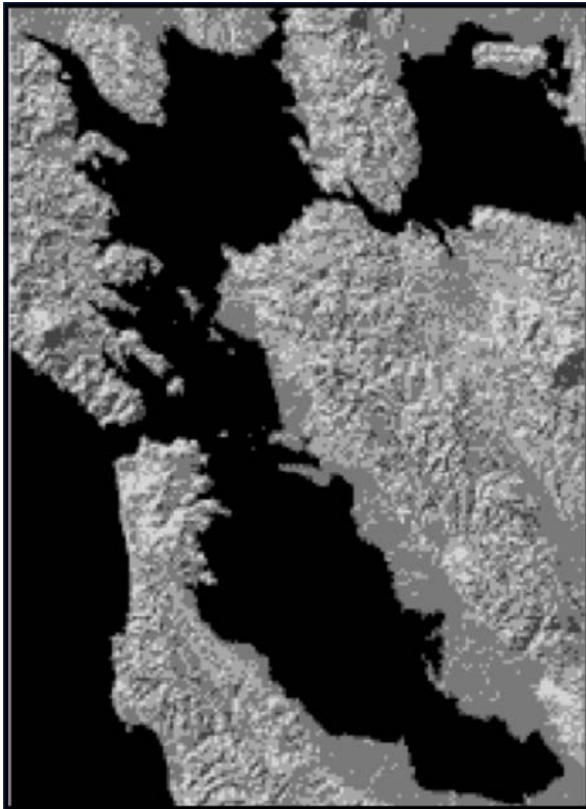
Physical Impacts Vary with Emission Levels

	Temp Change	Sierra snowpack	Critically dry years	Large fire risk	Sea level rise
High Emissions	8-10.4°F	90% loss	2.5x	<i>not evaluated</i>	22-33"
Medium Emissions	5.5-7.9°F	78-80% loss	2-2.5x	55% increase	14-22"
Lower Emissions	3.0-5.4°F	30-60% loss	1-1.5x	10-35% increase	6-14"

Source: California Climate Change Center, 2006.

San Francisco Bay

Past & Projected Sea Levels



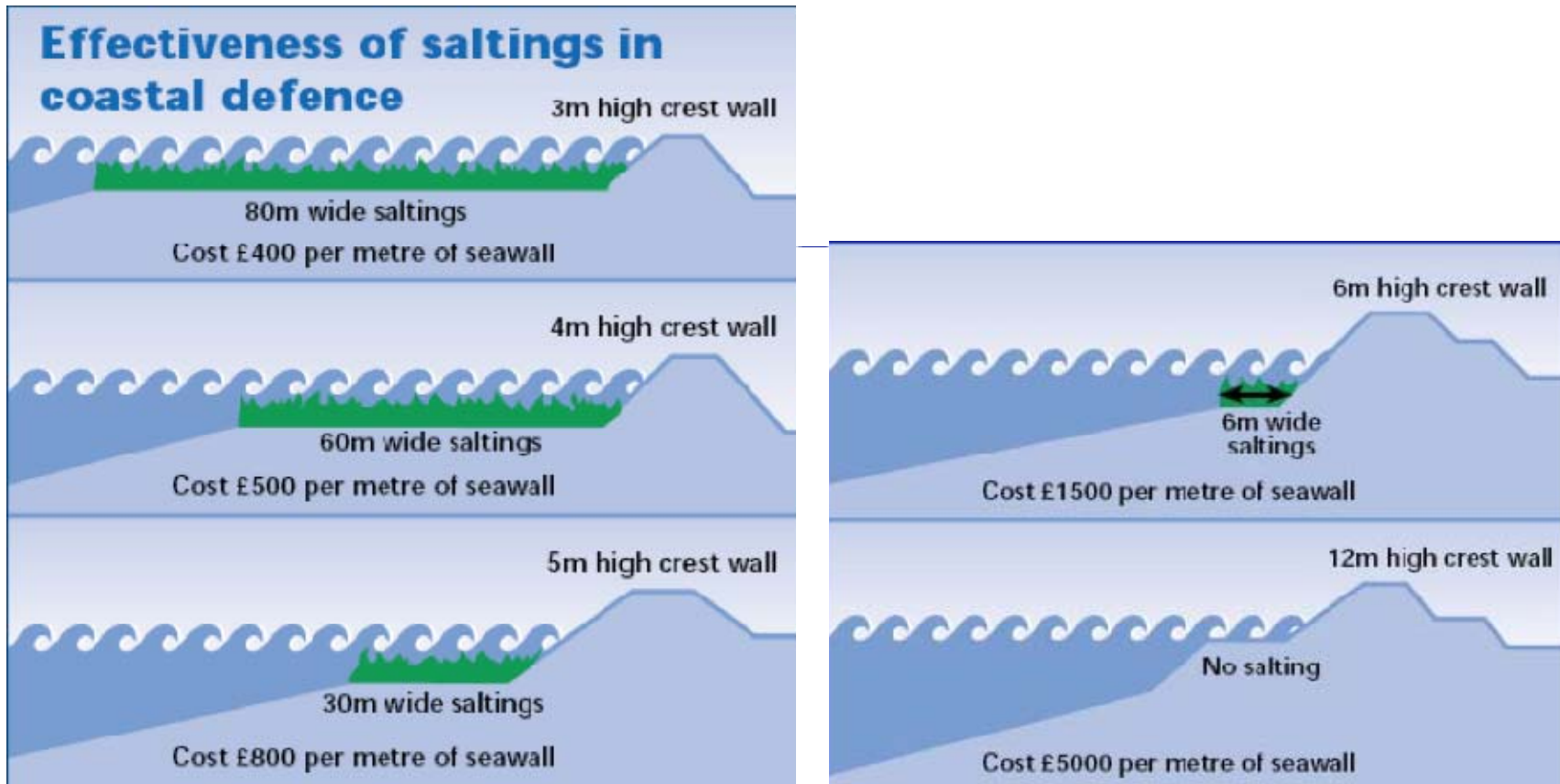
1849



2100

Credit: SF Bay Conservation & Development Commission.

Protection Costs & Store Carbon



Source: Brampton 1992.